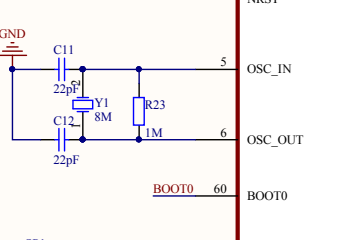
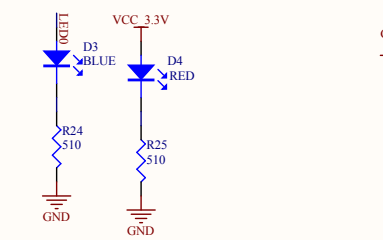
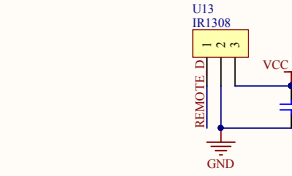
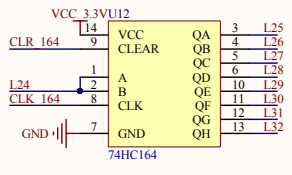
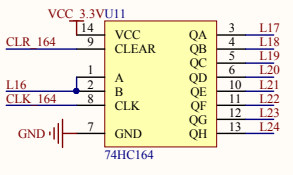
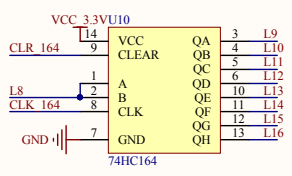
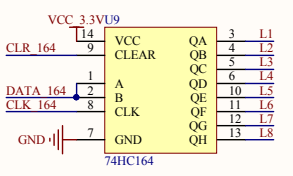
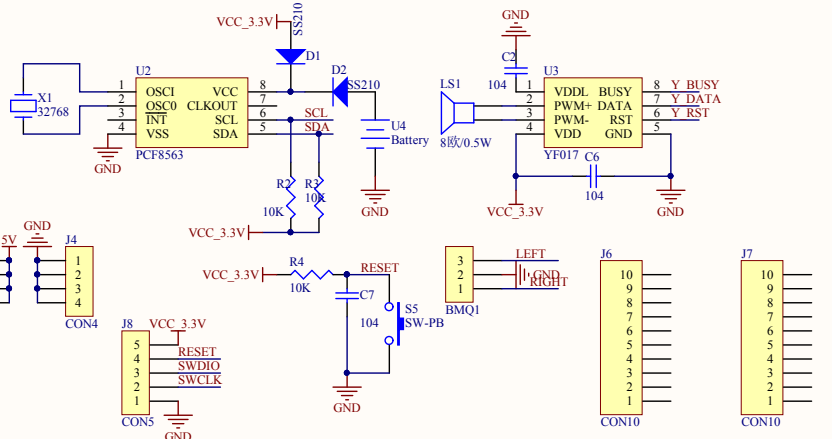


LED点阵行驱动电路



温湿度电路



KEY4	8	PC0/ADC_IN10	14	_DAT
BEEP	9	PC1/ADC_IN11	15	PA1
	10	PC2/ADC_IN12	16	_SCL
PC3	11	PC3/ADC_IN13	17	_SDA
LED0	24	PC4/ADC_IN14	20	_CS
REMOTE_D	25	PC5/ADC_IN15	21	_SCLK
PC6	37	PC6	22	_MISO
PC7	38	PC7	23	_MOSI
PC8	39	PC8	41	_PAS
PC9	40	PC9	42	_UT_TX
PC10	51	PC10	43	_UT_RX
PC11	52	PC11	44	_Y_BUSY
PC12	53	PC12	45	_Y_DATA
KEY1	2	PC13/ANT1_TAMP	46	_SWDIO
KEY2	3	PC14/OSC32_IN	49	_SWCLK
KEY3	4	PC15/OSC32_OUT	50	_Y_RST

PA0/WKUP/	USART2_CTS/	ADC_IN0/	TIM2_CH1_ETR	14	_DAT
PA1/USART2_RTS/	ADC_IN1/	TIM2_CH2	16	_SCL	
PA2/USART2_TX/	ADC_IN2/	TIM2_CH3	17	_SDA	
PA3/USART2_RX/	ADC_IN3/	TIM2_CH4	20	_CS	
PA4/SP1_NSS/	USART2_CK/	ADC_IN4	21	_SCLK	
PA5/SP1_SCK/	ADC_IN5	22	_MISO		
PA6/SP1_MISO/	ADC_IN6/	TIM3_CH1	23	_MOSI	
PA7/SP1_MOSI/	ADC_IN7/	TIM3_CH2	41	_PAS	
PA8/USART1_CK/	TIM1_CH1/MCO	42	_UT_TX		
PA9/USART1_TX/	TIM1_CH2	43	_UT_RX		
PA10/USART1_RX/	TIM1_CH3	44	_Y_BUSY		
PA11/USART1_CTS/	CANRX/TIM1_CH4/USBDM	45	_Y_DATA		
PA12/USART1_RTS/	USBDP/CANTX/TIM1_ETR	46	_SWDIO		
PA13/TMS/	SWDIO	49	_SWCLK		
PA14/ITC/	SWCLK	50	_Y_RST		
PA15/JTDI					

PB0/ADC12_IN8/	TIM3_CH3	26		
PB1/ADC12_IN9/	TIM3_CH4	28	_BOOT1	
PB2/	_BOOT1	28		
PB3/JTDO/	TRACESWO	55	_PB3	
PB4/	_INTRES	57	_CLK_595	
PB5/	I2C1_SMBAL	58	_LATCH_595	
PB6/	I2C1_SCL/TIM4_CH1/RE/	USART1_TX	59	_CLR_164
PB7/	I2C1_SDA/TIM4_CH2/RE/	USART1_RX	61	_CLK_164
PB8/	TIM4_CH3	62	_DATA_164	
PB9/	TIM4_CH4	29	_LEFT	
PB10/	I2C2_SCL/USART3_TX	30	_RIGHT	
PB11/	I2C2_SDA/USART3_RX	33	_PB12	
PB12/	SP1_NSS/I2C2_SMBAL/USART3_CK/	TIM1_BKIN	34	_PB13
PB13/	SP1_SCK/USART3_CTS/	TIM1_CHIN	35	_PB14
PB14/	SP1_MISO/TIM1_CH2N/USART3_RTS	36	_PB15	
PB15/	SP1_MOSI/I2S2_SD/TIM1_CH3N			

VDDA	13	VSSA	12	_GND
VDD1	32	VSS1	31	_GND
VDD2	48	VSS2	47	_GND
VDD3	64	VSS3	63	_GND
VDD4	19	VSS4	18	_GND
VBAT	1			

Title		
Size	Number	Revision
A3		
Date:	2017/4/1 星期六	Sheet of
File:	H:\赛亿-工作文件夹\116X64点阵万用板\116X64	1/1 Doc



Boards.